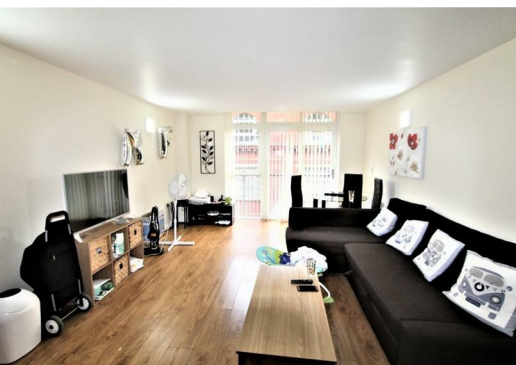




Rutland Street,
Leicester, Leicestershire, LE1 1SQ
£900 PCM



Newton Fallowell presents a a two bedroom apartment in Leicester city centre.

Comprising: Entrance hall, open plan lounge and fully-fitted kitchen including dishwasher, washing machine, fridge/freezer, oven/hob, master bedroom with en-suite bathroom, double bedroom and family bathroom. There is currently various furniture in situ but we can put forward requests for any items to be removed if required to the Landlord and feedback. Inventory can be provided upon request.

Benefiting from electric heating, double glazing, nd secure allocated parking space with valet parking.

Available soon. 12 month initial tenancy term - council tax band C leicester city council - EPC rating B - £900 rent - £900 deposit.

ACCOMMODATION

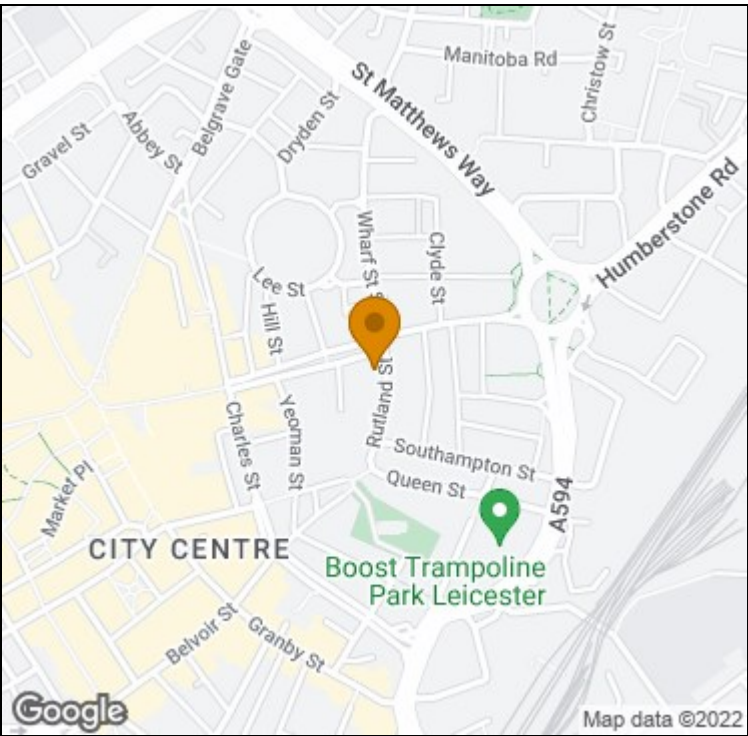
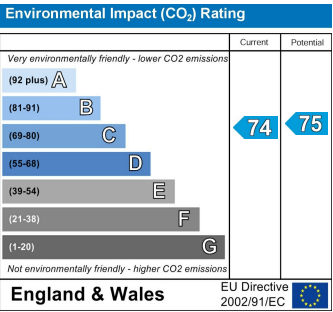
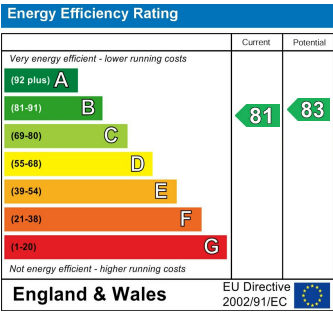
HALLWAY

MASTER BEDROOM AND EN-SUITE

FAMILY BATHROOM

SECOND BEDROOM

OPEN PLAN KITCHEN/LIVING AREA



t: 01163660990 e: oadby@newtonfallowell.co.uk
www.newtonfallowell.co.uk